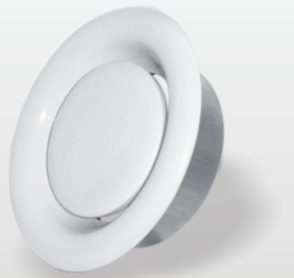
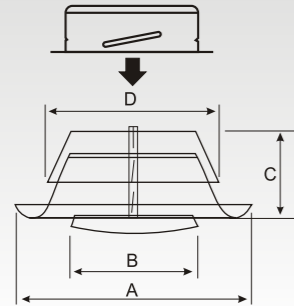


EAV



**.EAV**  
Steel air exhaust valves with adjustable core and 50mm mounting frame  
**.Application**  
Wall or ceiling mounted valves EAV for air exhaust inside buildings.  
**.Material**  
Steel  
**.Colour**  
RAL 9016, RAL 9010  
**.Composition**  
Pressed steel grill with adjustable core, supplied with galvanized steel mounting frame  
**.Mounting**  
Fixing in the mounting frame

EAV-Cr(chrome coating)

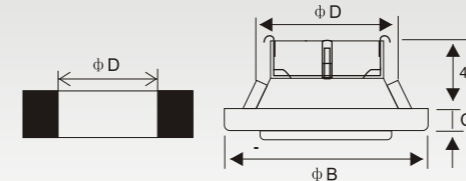


Type	A	B	C	D	☐	
EAV80	EAV-Cr80	115	62	42	77.5	7
EAV100	EAV-Cr100	138	75	40	97.5	7
EAV125	EAV-Cr125	164	100	46	122.5	7
EAV150	EAV-Cr150	202	120	50	147.5	7
EAV160	EAV-Cr160	211	130	54	157.5	7
EAV200	EAV-Cr200	248	158	63	197.5	7
EAV250	EAV-Cr250	305	215	75	248	7

EAVC



**.EAVC**  
Air extraction valves with adjustable core  
**.Application**  
For air extraction in ventilation systems  
**.Material**  
Steel  
**.Colour**  
RAL 9016, RAL 9010  
**.Composition**  
Pressed steel body with adjustable core, supplied with galvanized steel mounting frame  
**.Mounting**  
Fixing by clips in the mounting frame  
Can also be used for direct mounting into round duct (with or without mounting frame)  
EAVC-Cr(chrome coating)



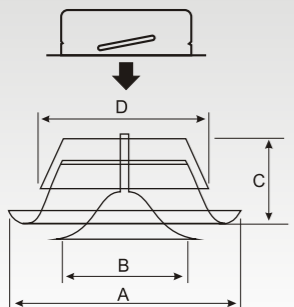
Type	ΦD	ΦB	C	☐
EAVC63	63	92	16	7
EAVC80	80	108	16	7
EAVC100	100	137	16	7
EAVC125	125	162	16	7
EAVC160	150	193	16	7
EAVC200	200	240	16	7

SAV



**.SAV**  
Steel air supply valves with adjustable core and 50mm mounting frame  
**.Application**  
Wall or ceiling mounted valves SAV are used for air supply inside buildings.  
**.Material**  
Steel  
**.Colour**  
RAL 9016, RAL 9010  
**.Composition**  
Pressed steel grill with adjustable core supplied with galvanized steel mounting frame  
**.Mounting**  
Fixing in the mounting frame

SAV-Cr(chrome coating)

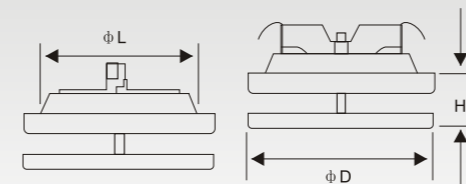


Type	A	B	C	D	☐	
SAV80	SAV-Cr80	115	76	42	77.5	7
SAV100	SAV-Cr100	138	92	40	97.5	7
SAV125	SAV-Cr125	164	111	46	122.5	7
SAV150	SAV-Cr150	202	135	50	147.5	7
SAV160	SAV-Cr160	211	147	54	157.5	7
SAV200	SAV-Cr200	248	194	63	197.5	7
SAV250	SAV-Cr250	305	215	75	248	7

SAVC



**.SAVC**  
Air supply valve with adjustable core  
**.Application**  
For air supply in ventilation systems  
**.Material**  
Steel  
**.Colour**  
RAL 9016, RAL 9010  
**.Composition**  
Pressed steel body with adjustable core, supplied with galvanized steel mounting frame  
**.Mounting**  
Fixing by clips in the mounting frame  
Can also be used for direct mounting into round ducts (with or without mounting frame)  
SAVC-Cr(chrome coating)



Type	H	ΦD	ΦL	☐
SAVC80	27-57	108	80	7
SAVC100	27-57	137	100	7
SAVC125	27-57	162	125	7
SAVC160	27-57	193	160	7
SAVC200	27-57	240	200	7