

## Features

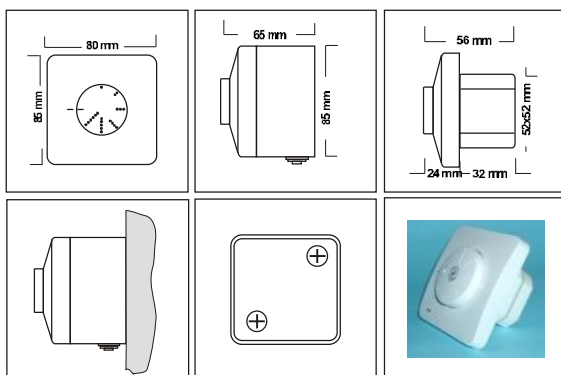
- Supply: 230Vac 50Hz.
- Mounting: Surface and flush version.
- Control type: Potentiometer.
- Infinitely variable speed control.
- Switch: On/Off inbuilt with potentiometer.
- Minimum speed: Internally adjustable.
- Regulation: Soft start min. to max.  
Hard start max. to min.
- Protection: VSR by fast current fuse.  
VST by built-in temperature cut-off fuses.
- Special for ventilation systems.
- Noise level reduction.
- Radio interference protected.
- Max. ambient running temperature: 35°C.



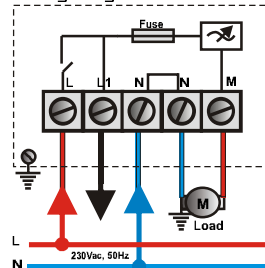
### • Single phase electronic speed controller

The electronic speed controllers are based on the principle of phase angle control by means of triacs. They are applicable for the adjustment of single phase voltage controllable asynchronous electric motors to control the speed. The range of electronic speed regulators provides an economic means of regulation for voltage controllable single-phase AC motors, fans and pumps. A number of different fans can be controlled with one controller within 85% of the controller's maximum load. These speed controllers offer an excellent and accurate regulation. The minimum speed can be adjusted using the potentiometer. Fast current and temperature fuses complete the user security. All models have an extra (not regulated) 230V output.

VSR 10	VSR 15	VSR 20	VSR 25	VSR 40
Current: 0.1-1.0A	Current: 0.1-1.5A	Current: 0.2-2.0A	Current: 0.2-2.5A	Current: 0.4-4.0A
Fuse 5*20: F1.25H	Fuse 5*20: F2.0H	Fuse 5*20: F2.5H	Fuse 5*20: F3.15H	Fuse 5*20: F5.0H
Dimensions mm: 80x85x65	Dimensions mm: 80x85x65	Dimensions mm: 80x85x65	Dimensions mm: 80x85x65	Dimensions mm: 80x85x65
Weight gr: 265	Weight gr: 270	Weight gr: 275	Weight gr: 280	Weight gr: 350



Wiring diagram:



Connection: Terminal block  
 L - Supply 230V 50Hz  
 L1 - No regulated output 230V  
 N - Supply neutral  
 N - Supply neutral  
 M - Regulated output live