

Axial roof fans with flat base



Axial roof fans with plastic fibreglass-reinforced impeller, with flat base for roof mounting.



Fan:

- Galvanised sheet steel base plate
- Impellers in polyamide 6 reinforced with fibreglass, except for 4-pole 100 models in aluminium.
- Bird guard
- Sheet steel rain deflector hood with anticorrosive protection, except models 80, 90, 100 which come in polyester
- Airflow direction from motor to impeller

Motor:

- IE2 efficiency motors for capacities equal to or over 0.75kW and below 7.5kW, except single-phase, 2 speed and 8 pole motors.
- IE3 efficiency motors for capacities equal to or over 7.5kW, except single-phase, 2 speed and 8 pole motors.
- Class F motors, with ball bearings and IP55 protection, except single-phase versions from size 45 to size 63, IP54 protection.
- Single-phase 220-240V-50Hz. and three-phase 220-240V/380-415V-50Hz. (up to 4kW.) and 400/690V.-50Hz. (power over 4kW.)
- Max. air temperature to transport: -25°C + 60°C

Finish:

- Anticorrosive finish in polyester resin polymerised at 190°C, after degreasing with phosphate-free nanotechnology treatment.

On request:

- IE2 and IE3 efficiency motors for any power.
- Possibility of supply as IMPULSION FANS
- AL version cast aluminium impellers.
- Special windings for different voltages
- ATEX certification, Category 2



Order code



HT — **25** — **4T** — **I** — **BS**

↓ Axial roof fans with flat base

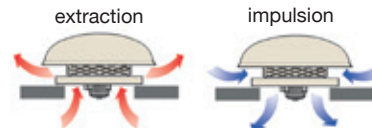
↓ Impeller diameter in cm.

↓ Number of motor poles
2=2900 r/min. 50 Hz
4=1400 r/min. 50 Hz
6=750 r/min. 50 Hz

↓ M=Single-phase
T=Three-phase

↓ I: Extraction fans
A: Impulsion fans

↓ BS: High base plate
BSS: High base plate with silencer.



Technical characteristics

Model	Speed (r/min)	Maximum admissible current (A)			Installed capacity (kW)	Maximum airflow (m³/h)	Sound pressure level dB(A)		Approx. weight (Kg)
		230V	400V	690V			Inlet	Outlet	
HT-25-4T	1320	0.65	0.38		0.09	1080	41	40	12.5
HT-25-4M	1380	0.65			0.10	1080	41	40	12.5
HT-31-4T	1320	0.65	0.38		0.09	1800	47	46	13.3
HT-31-4M	1370	0.83			0.09	1800	47	46	13.5
HT-35-4T	1320	0.65	0.38		0.09	2600	48	47	17.5
HT-35-4M	1370	0.83			0.09	2600	48	47	17.5
HT-40-4T	1350	1.66	0.96		0.25	4600	51	50	21.0
HT-40-4M	1370	2.00			0.25	4600	51	50	21.0
HT-45-4T	1370	2.02	1.17		0.37	6500	55	53	29.0
HT-45-4M	1400	2.76			0.37	6500	55	54	30.5
HT-50-4T	1380	2.92	1.69		0.55	8500	59	57	36.0
HT-50-4M	1350	4.40			0.55	8500	59	57	39.0
HT-56-4T	1410	3.10	1.79		0.75	9800	61	57	35.0
HT-56-4M	1410	5.05			0.75	9800	61	57	37.0
HT-56-6T	900	1.51	0.87		0.25	6600	48	46	46.0
HT-56-6M	900	2.07			0.25	6600	48	46	46.0
HT-63-4T	1400	4.03	2.32		1.10	14000	63	59	65.8
HT-63-6T	900	2.24	1.30		0.37	9200	52	49	61.8
HT-63-6M	900	2.69			0.37	9200	52	49	61.8
HT-71-4T	1430	5.96	3.44		1.50	18000	69	67	64.0
HT-71-6T	900	2.99	1.73		0.55	12200	58	56	64.9

Technical characteristics

Model	Speed (r/min)	Maximum admissible current (A)			Installed capacity (kW)	Maximum airflow (m ³ /h)	Sound pressure level dB(A)		Approx. weight (Kg)
		230V	400V	690V			Inlet	Outlet	
HT-71-6M	900	3.84			0.55	12200	58	56	64.9
HT-80-4T	1445	8.36	4.83		2.20	26200	73	70	87.8
HT-80-6T	945	4.88	2.82		1.10	18000	64	61	81.8
HT-90-4T	1445	10.96	6.33		3.00	31500	77	74	94.0
HT-90-6T	955	6.42	3.71		1.50	21200	68	65	91.0
HT-100-4T-7.5	1440		11.60	6.72	5.50	37000	80	77	114.0
HT-100-4T-10 IE3	1465		13.90	8.06	7.50	44000	84	81	141.0
HT-100-6T-2	955	6.42	3.71		1.50	25000	71	68	102.0
HT-100-6T-3	955	9.30	5.30		2.20	28200	75	72	106.0
HT-100-8T-1.5	705	5.63	3.25		1.10	19050	64	61	103.0
HT-100-8T-2	705	7.10	4.10		1.50	21100	66	63	114.0



Erp. BEP (best efficiency point) characteristics

MC	Measurement category	ηe[%]	Efficiency
EC	Efficiency category	N	Degree of efficiency
S	Static	[kW]	Electrical power
T	Total	[m³/h]	Airflow
VSD	Variable-speed drive	[mmH₂O]	Static or total pressure (According to EC)
SR	Specific relationship	[RPM]	Speed

Model	MC	EC	VSD	SR	ηe [%]	N	[kW]	[m ³ /h]	[mmH ₂ O]	[RPM]
HT-25-4T	-	-	-	-	-	-	0.099	586	3.45	1358
HT-25-4M	-	-	-	-	-	-	0.102	566	3.59	1386
HT-31-4T	-	-	-	-	-	-	0.103	1013	4.06	1397
HT-31-4M	-	-	-	-	-	-	0.111	1004	4.09	1418
HT-35-4T	-	-	-	-	-	-	0.125	1857	6.94	1375
HT-35-4M	A	S	NO	1.00	28.0%	40.0	0.126	1851	6.96	1422
HT-40-4T	A	S	NO	1.00	32.0%	41.7	0.289	3401	10.00	1396
HT-40-4M	A	S	NO	1.00	31.0%	40.6	0.299	3399	10.01	1405
HT-45-4T	A	S	NO	1.00	33.4%	41.8	0.475	4228	13.80	1392
HT-45-4M	A	S	NO	1.00	32.3%	40.5	0.494	4257	13.73	1417
HT-50-4T	B	T	NO	1.00	53.4%	60.6	0.733	9635	14.91	1395
HT-50-4M	B	T	NO	1.00	51.3%	58.4	0.763	9642	14.90	1411
HT-56-4T	B	T	NO	1.00	66.7%	74.0	0.700	12713	13.47	1433
HT-56-4M	B	T	NO	1.00	56.7%	63.6	0.824	12698	13.49	1445
HT-56-6T	A	S	NO	1.00	31.4%	41.7	0.237	3564	7.69	919
HT-63-4T	C	S	NO	1.00	45.3%	51.1	1.179	10593	18.50	1412
HT-63-6T	C	S	NO	1.00	32.7%	41.1	0.474	6417	8.88	921
HT-63-6M	C	S	NO	1.00	32.2%	40.6	0.482	6339	8.99	915
HT-71-4T	C	S	NO	1.00	50.1%	55.3	1.508	13256	20.95	1442
HT-71-6T	C	S	NO	1.00	35.7%	43.0	0.710	8036	11.60	913
HT-71-6M	C	S	NO	1.00	33.6%	40.7	0.755	7945	11.73	908
HT-80-4T	C	S	NO	1.00	56.7%	60.7	2.309	16178	29.73	1451
HT-80-6T	C	S	NO	1.00	46.7%	52.1	1.380	15312	15.45	946
HT-90-4T	C	S	NO	1.00	58.1%	61.1	3.362	20308	35.36	1447
HT-90-6T	C	S	NO	1.00	50.9%	55.7	1.777	18106	18.37	957
HT-100-4T-7.5	C	S	NO	1.00	51.0%	52.4	5.965	27281	40.95	1443
HT-100-4T-10 IE3	C	S	NO	1.00	48.4%	49.1	7.832	36164	38.48	1467
HT-100-6T-2	C	S	NO	1.00	47.5%	52.5	1.619	19961	14.14	953
HT-100-6T-3	C	S	NO	1.00	47.3%	51.1	2.461	23849	17.92	959
HT-100-8T-1.5	C	S	NO	1.00	47.6%	52.9	1.452	19345	13.11	707
HT-100-8T-2	C	S	NO	1.00	42.7%	47.2	1.923	20901	14.42	706

Best efficiency point data of the internal fan

Acoustic features

The specified values are determined according to free field measurements of pressure and sound levels in dB(A) at a distance of 6 m.

Sound power Lw(A) spectrum in dB(A) via frequency band in Hz.

Values taken at inlet with maximum airflow (Qmax)

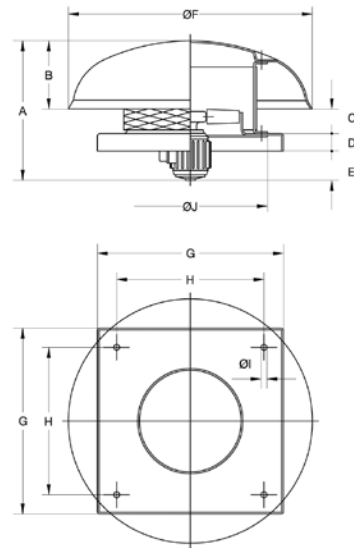
Model	63	125	250	500	1000	2000	4000	8000
25	27	37	54	54	62	58	51	42
31	33	43	60	60	68	64	57	48
35	34	44	61	61	69	65	58	49
40	28	45	57	65	70	70	66	59
45	32	49	61	69	74	74	70	63
50	36	53	65	73	78	78	74	67
56-4	38	55	67	75	80	80	76	69
56-6	25	42	54	62	67	67	63	56
63-4	40	57	69	77	82	82	78	71
63-6	29	46	58	66	71	71	67	60
71-4	46	63	75	83	88	88	84	77
71-6	35	52	64	72	77	77	73	66
80-4	57	78	85	90	93	89	82	71
80-6	48	69	76	81	84	80	73	62
90-4	61	82	89	94	97	93	86	75
90-6	52	73	80	85	88	84	77	66
100-4-7.5	64	85	92	97	100	96	89	78
100-4-10	68	89	96	101	104	100	93	82
100-6-2	55	76	83	88	91	87	80	69
100-6-3	59	80	87	92	95	91	84	73
100-8-1.5	48	69	76	81	84	80	73	62
100-8-2	50	71	78	83	86	82	75	64

Values taken at outlet with maximum airflow (Qmax)

Model	63	125	250	500	1000	2000	4000	8000
25	26	36	53	53	61	57	50	41
31	32	42	59	59	67	63	56	47
35	33	43	60	60	68	64	57	48
40	27	44	56	64	69	69	65	58
45	30	47	59	67	72	72	68	61
50	34	51	63	71	76	76	72	65
56-4	34	51	63	71	76	76	72	65
56-6	23	40	52	60	65	65	61	54
63-4	36	53	65	73	78	78	74	67
63-6	26	43	55	63	68	68	64	57
71-4	44	61	73	81	86	86	82	75
71-6	33	50	62	70	75	75	71	64
80-4	54	75	82	87	90	86	79	68
80-6	45	66	73	78	81	77	70	59
90-4	58	79	86	91	94	90	83	72
90-6	49	70	77	82	85	81	74	63
100-4-7.5	61	82	89	94	97	93	86	75
100-4-10	65	86	93	98	101	97	90	79
100-6-2	52	73	80	85	88	84	77	66
100-6-3	56	77	84	89	92	88	81	70
100-8-1.5	45	66	73	78	81	77	70	59
100-8-2	47	68	75	80	83	79	72	61

Dimensions in mm

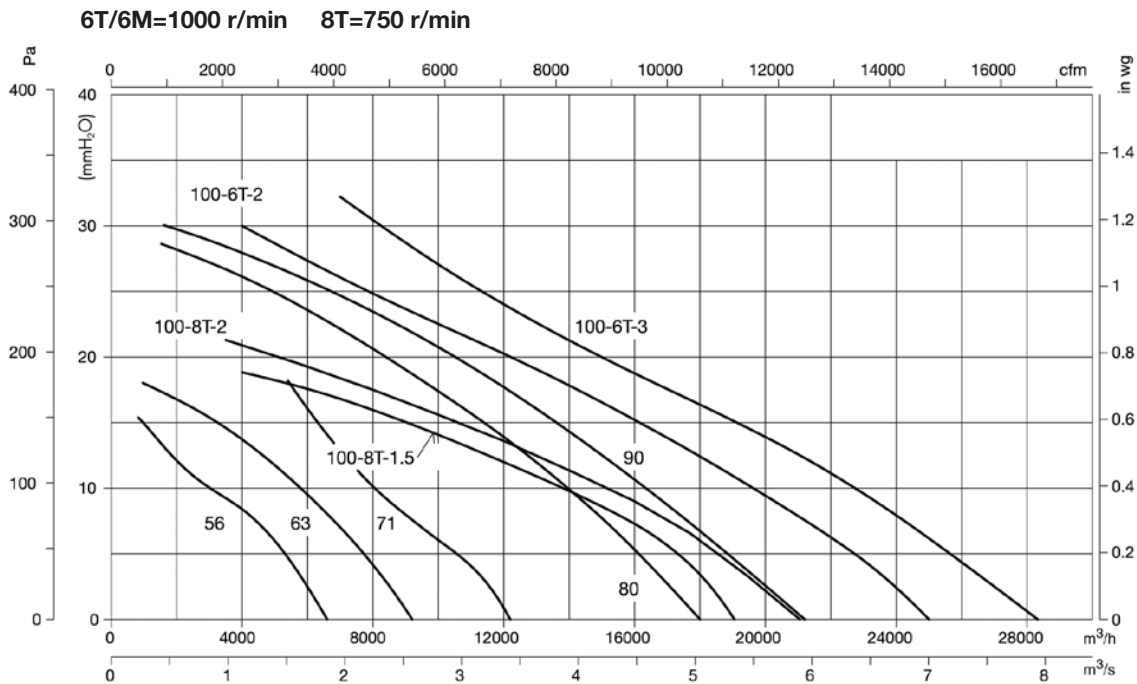
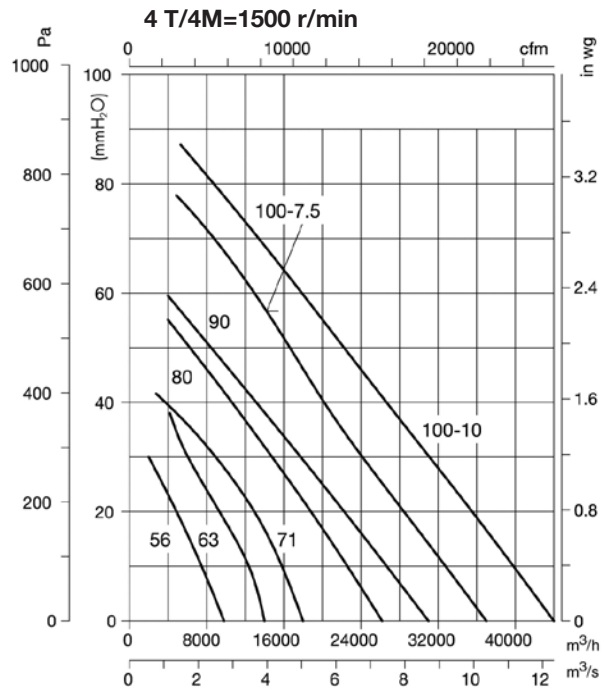
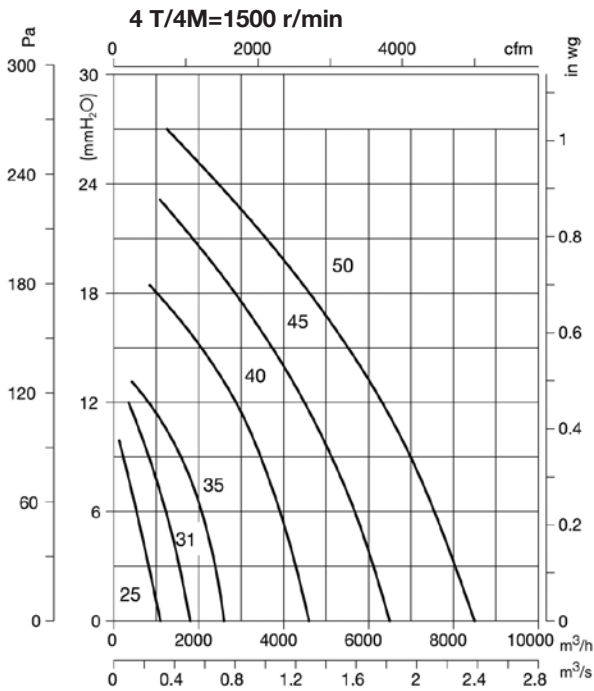
Model	A	B	C	D	E	ØF	G	H	ØI	ØJ
HT-25	400	176	44	40	140	620	450	360	12	346
HT-31	423	176	67	40	140	620	500	410	12	416
HT-35	472	228	64	40	140	770	560	450	12	486
HT-40	478	228	82	40	128	770	630	530	12	536
HT-45-4T	550	266	88	50	146	960	710	590	12	596
HT-45-4M	512	266	88	50	108	960	710	590	12	596
HT-50-4T	575	296	83	50	146	1090	800	680	12	676
HT-50-4M	558	296	83	50	129	1090	800	680	12	676
HT-56-4T	607	296	117	40	154	1090	900	750	14	758
HT-56-4M	590	296	117	40	137	1090	900	750	14	758
HT-56-6	589	296	117	40	136	1090	900	750	14	758
HT-63-4	714	357	136	40	182	1285	1000	850	14	735
HT-63-6	667	357	136	40	135	1285	1000	850	14	735
HT-71-4T	740	357	166	40	178	1285	1000	850	14	815
HT-71-6	689	357	166	40	178	1285	1000	850	14	815
HT-80-4	840	357	244	50	189	1285	1150	1000	14	905
HT-80-6	804	357	244	50	153	1285	1150	1000	14	905
HT-90-4	892	440	213	50	189	1580	1150	1000	14	1020
HT-90-6	896	440	213	50	193	1580	1150	1000	14	1020
HT-100-4T	997	440	284	50	223	1580	1250	1100	14	1120
HT-100-6T-2	940	440	284	50	166	1580	1250	1100	14	1120
HT-100-6T-3	957	440	284	50	183	1580	1250	1100	14	1120
HT-100-8T-1.5	940	440	284	50	166	1580	1250	1100	14	1120
HT-100-8T-2	957	440	284	50	183	1580	1250	1100	14	1120



Characteristic Curves

Q = Airflow in m³/h, m³/s and cfm.

Pe= Static pressure in mmH₂O, Pa and inwg.



Accessories

See accessories section.

