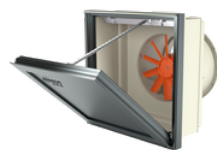


## WALL/DUCT-63-4T-1.5 IE3

### Dynamic wall mount extractor fans fitted with motorised hatch

Dynamic wall mount extractor fans with motorised opening system for connection to extract duct. Suitable for installation in industrial buildings, stores or in any other type of building.



#### Fan:

- Helicoidal casing support and fixing flange to allow easy wall anchorage and installation.
- Tubular casing in sheet steel with external terminal box.
- PL impellers manufactured in polyamide 6 re-inforced with fibreglass. AL impellers manufactured in cast aluminum. Models 40-2T, 45-2T, 100-4T-15, 100-4T-20 and 125 are only supplied in AL version.
- Airflow direction from motor to impeller.

#### Extruded aluminum hatch:

- An extremely robust structure that is able to withstand severe weather changes.
- Designed to ensure watertightness.
- Aluminum profile with thermal bridge break.
- Central ceiling and structure equipped with high performance thermal insulation.
- Thermal resistance of the assembly less than 0.89 W/m<sup>2</sup>-K.
- Limit switches in both positions (open and closed).
- Possibility of mounting in upper and lower opening. Size 125 only top opening.
- Manual opening system.

#### Motor:

- IE3 efficiency motors.
- Class F motors with ball bearings, IP55 protection.
- Three-phase 230/400 V 50 Hz (up to 4 kW) and 400/690 V 50 Hz (powers greater than 4 kW).
- Working temperature: -25 °C +60 °C.

#### Actuator:

- Reliability greater than 11,000 dual cycles.
- Supply voltage at 230 V AC 50/60 Hz.
- Working temperature: -25 °C +60 °C.

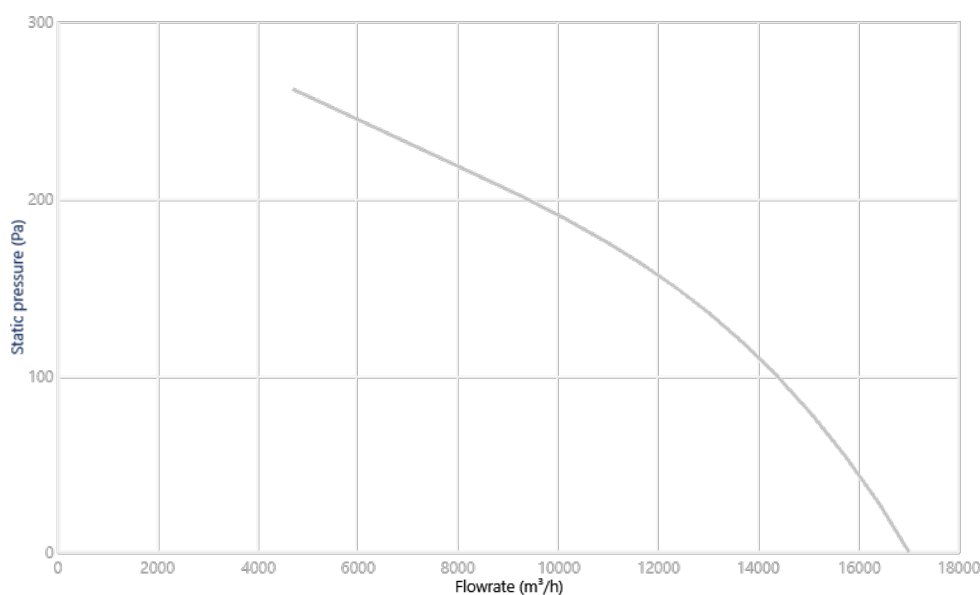
#### Flap finish:

- Anti-corrosive in extruded aluminum.
- RAL 7016 supplied as standard. Any other RAL can be supplied on demand.

#### On request:

- AA: impeller-motor air direction for air entry to premises.

## CHARACTERISTIC CURVE AND ACOUSTICS AT 1.2KG/M<sup>3</sup>



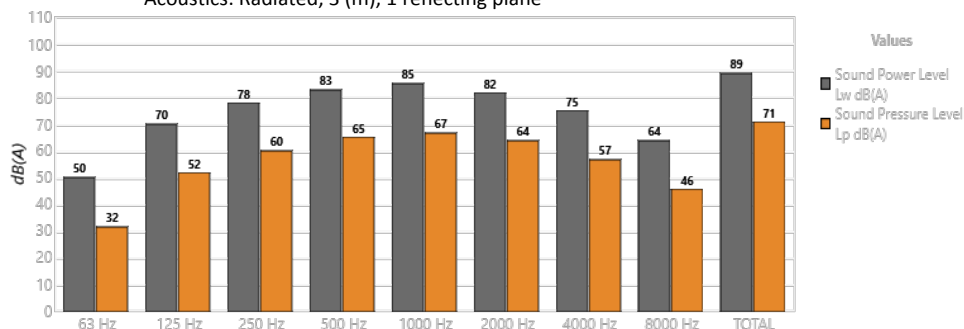
#### Design Point

Q (m³/h)	
Ps (Pa)	

#### Service Point (SP)

Q (m³/h)	-
Ps (Pa)	-
Pd (Pa)	-
Pt (Pa)	-

Acoustics: Radiated, 3 (m), 1 reflecting plane



Band	Lw dB(A)	Lp dB(A)
63 Hz	50	32
125 Hz	70	52
250 Hz	78	60
500 Hz	83	65
1000 Hz	85	67
2000 Hz	82	64
4000 Hz	75	57
8000 Hz	64	46
TOTAL	89	71

## TECHNICAL CHARACTERISTICS

Airflow maximum (m³/h)	17000
Speed (rpm)	1455
Maximum static pressure (Pa)	261.8
Maximum total pressure (Pa)	271.6

## ERP

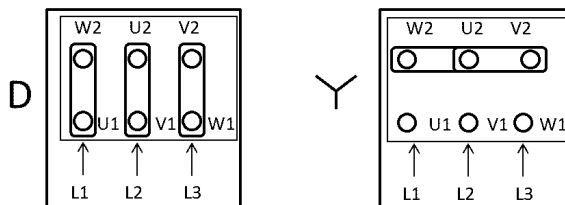
Efficiency	67.6%
Efficiency grade N	73.6
Measurement category	C
Efficiency category	Total
Specific ratio	1.00
Flowrate (m³/h)	14324

Pressure (Pa)	20
Input power (kW)	1.134
Speed (rpm)	1455
Variable speed drive	VSD not necessary
ErP compliance	2015

♦ Data established at point of optimum efficiency

## MOTOR DATA

Rated Mechanical Power (kW)	1.1
Hz/phases	50/3
Motor (rpm)	1455
Poles	4P
Max. current (A) 380-415 V Y	2.34
Max. current (A) 220-240 V D	4.07
Motor protection	IP55
Motor frame size	90S/L



Data can change, please check motor plate

## DIMENSIONS

A	B	C [1]	D [2]	ØD*	I	J	H	G	E	F	J1	J2	K1
990	990	1000	1000	630	80	385	560	540	82	760	1050	300	1050

K2	X2	Ød
300	215	13

[1] (C x D) Nominal size of the wall opening.

[2] (C x D) Nominal size of the wall opening.

Dimensions without explicitly defined units are shown in millimeters (mm). Dimensions depending on the motor are approximate

Approx. weight (kg)	104
---------------------	-----

