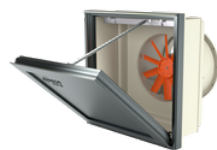


WALL/DUCT-56-4T-2 IE3



Dynamic wall mount extractor fans fitted with motorised hatch

Dynamic wall mount extractor fans with motorised opening system for connection to extract duct. Suitable for installation in industrial buildings, stores or in any other type of building.



Fan:

- Helicoidal casing support and fixing flange to allow easy wall anchorage and installation.
- Tubular casing in sheet steel with external terminal box.
- PL impellers manufactured in polyamide 6 re-inforced with fibreglass. AL impellers manufactured in cast aluminum. Models 40-2T, 45-2T, 100-4T-15, 100-4T-20 and 125 are only supplied in AL version.
- Airflow direction from motor to impeller.

Extruded aluminum hatch:

- An extremely robust structure that is able to withstand severe weather changes.
- Designed to ensure watertightness.
- Aluminum profile with thermal bridge break.
- Central ceiling and structure equipped with high performance thermal insulation.
- Thermal resistance of the assembly less than 0.89 W/m²-K.
- Limit switches in both positions (open and closed).
- Possibility of mounting in upper and lower opening. Size 125 only top opening.
- Manual opening system.

Motor:

- IE3 efficiency motors.
- Class F motors with ball bearings, IP55 protection.
- Three-phase 230/400 V 50 Hz (up to 4 kW) and 400/690 V 50 Hz (powers greater than 4 kW).
- Working temperature: -25 °C +60 °C.

Actuator:

- Reliability greater than 11,000 dual cycles.
- Supply voltage at 230 V AC 50/60 Hz.
- Working temperature: -25 °C +60 °C.

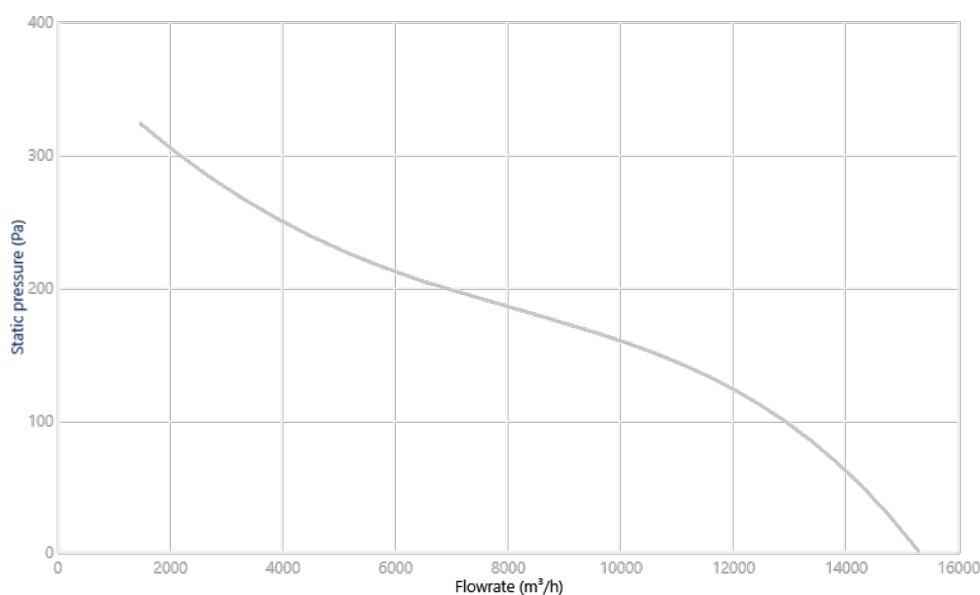
Flap finish:

- Anti-corrosive in extruded aluminum.
- RAL 7016 supplied as standard. Any other RAL can be supplied on demand.

On request:

- AA: impeller-motor air direction for air entry to premises.

CHARACTERISTIC CURVE AND ACOUSTICS AT 1.2KG/M³



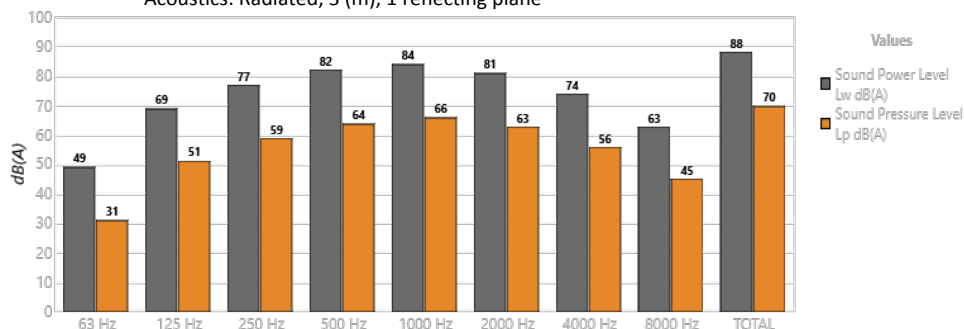
Design Point

Q (m³/h)	
Ps (Pa)	

Service Point (SP)

Q (m³/h)	-
Ps (Pa)	-
Pd (Pa)	-
Pt (Pa)	-

Acoustics: Radiated, 3 (m), 1 reflecting plane



Band	Lw dB(A)	Lp dB(A)
63 Hz	49	31
125 Hz	69	51
250 Hz	77	59
500 Hz	82	64
1000 Hz	84	66
2000 Hz	81	63
4000 Hz	74	56
8000 Hz	63	45
TOTAL	88	70

TECHNICAL CHARACTERISTICS

Airflow maximum (m³/h)	15292
Speed (rpm)	1440
Maximum static pressure (Pa)	323.5
Maximum total pressure (Pa)	325.1

ERP

Efficiency	52.9%
Efficiency grade N	58.0
Measurement category	C
Efficiency category	Total
Specific ratio	1.00
Flowrate (m³/h)	13769

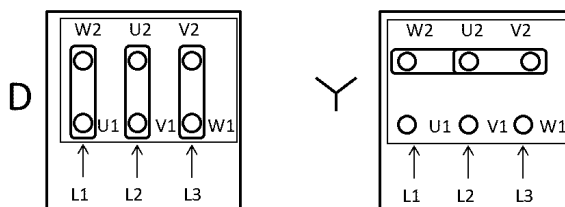
Pressure (Pa)	22
Input power (kW)	1.555
Speed (rpm)	1440
Variable speed drive	VSD not necessary
ErP compliance	2015

♦ Data established at point of optimum efficiency

MOTOR DATA

Rated Mechanical Power (kW)	1.5
Hz/phases	50/3
Motor (rpm)	1440
Poles	4P
Max. current (A) 380-415 V Y	3.11
Max. current (A) 220-240 V D	5.41
Motor protection	IP55
Motor frame size	90

Data can change, please check motor plate



DIMENSIONS

A	B	C [1]	D [2]	ØD*	I	J	H	G	E	F	J1	J2	K1
690	690	700	700	560	80	340	530	510	82	560	790	220	790

K2	X2	Ød
220	215	13

[1] (C x D) Nominal size of the wall opening.

[2] (C x D) Nominal size of the wall opening.

Dimensions without explicitly defined units are shown in millimeters (mm). Dimensions depending on the motor are approximate

Approx. weight (kg)	83
---------------------	----

