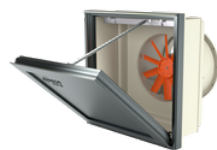


WALL/DUCT-40-2T-1.5 IE3



Dynamic wall mount extractor fans fitted with motorised hatch

Dynamic wall mount extractor fans with motorised opening system for connection to extract duct. Suitable for installation in industrial buildings, stores or in any other type of building.



Fan:

- Helicoidal casing support and fixing flange to allow easy wall anchorage and installation.
- Tubular casing in sheet steel with external terminal box.
- PL impellers manufactured in polyamide 6 re-inforced with fibreglass. AL impellers manufactured in cast aluminum. Models 40-2T, 45-2T, 100-4T-15, 100-4T-20 and 125 are only supplied in AL version.
- Airflow direction from motor to impeller.

Extruded aluminum hatch:

- An extremely robust structure that is able to withstand severe weather changes.
- Designed to ensure watertightness.
- Aluminum profile with thermal bridge break.
- Central ceiling and structure equipped with high performance thermal insulation.
- Thermal resistance of the assembly less than 0.89 W/m²-K.
- Limit switches in both positions (open and closed).
- Possibility of mounting in upper and lower opening. Size 125 only top opening.
- Manual opening system.

Motor:

- IE3 efficiency motors.
- Class F motors with ball bearings, IP55 protection.
- Three-phase 230/400 V 50 Hz (up to 4 kW) and 400/690 V 50 Hz (powers greater than 4 kW).
- Working temperature: -25 °C +60 °C.

Actuator:

- Reliability greater than 11,000 dual cycles.
- Supply voltage at 230 V AC 50/60 Hz.
- Working temperature: -25 °C +60 °C.

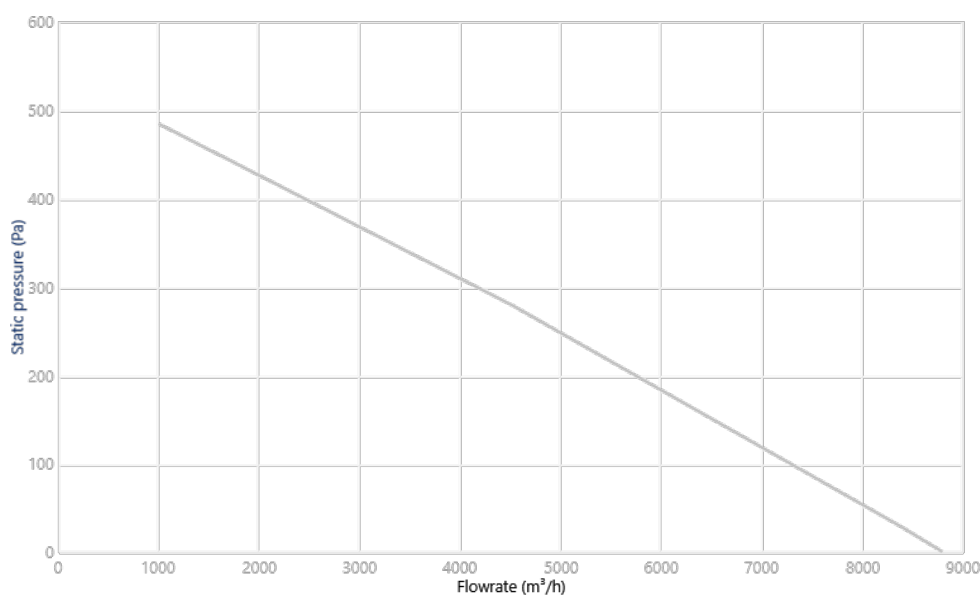
Flap finish:

- Anti-corrosive in extruded aluminum.
- RAL 7016 supplied as standard. Any other RAL can be supplied on demand.

On request:

- AA: impeller-motor air direction for air entry to premises.

CHARACTERISTIC CURVE AND ACOUSTICS AT 1.2KG/M³



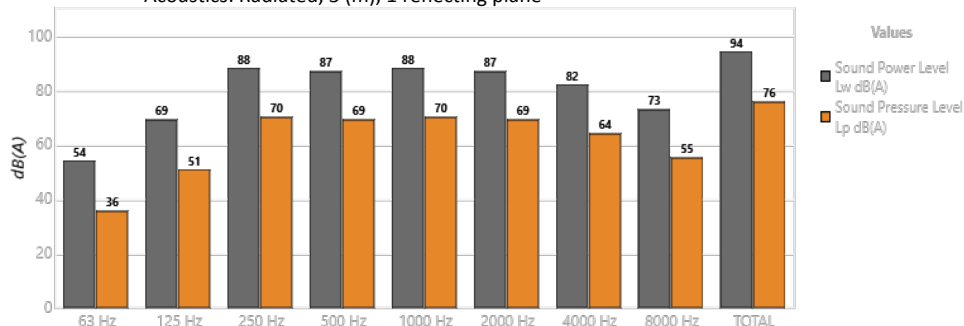
Design Point

Q (m³/h)	
Ps (Pa)	

Service Point (SP)

Q (m³/h)	-
Ps (Pa)	-
Pd (Pa)	-
Pt (Pa)	-

Acoustics: Radiated, 3 (m), 1 reflecting plane



Band	Lw dB(A)	Lp dB(A)
63 Hz	54	36
125 Hz	69	51
250 Hz	88	70
500 Hz	87	69
1000 Hz	88	70
2000 Hz	87	69
4000 Hz	82	64
8000 Hz	73	55
TOTAL	94	76

TECHNICAL CHARACTERISTICS

Airflow maximum (m³/h)	8800
Speed (rpm)	2830
Maximum static pressure (Pa)	484.3
Maximum total pressure (Pa)	487

ERP

Efficiency	62.4%
Efficiency grade N	69.3
Measurement category	C
Efficiency category	Total
Specific ratio	1.00
Flowrate (m³/h)	8806

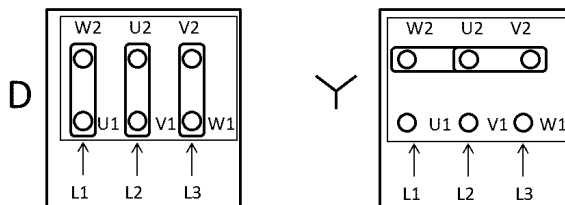
Pressure (Pa)	21
Input power (kW)	0.810
Speed (rpm)	2830
Variable speed drive	VSD not necessary
ErP compliance	2015

♦ Data established at point of optimum efficiency

MOTOR DATA

Rated Mechanical Power (kW)	1.1
Hz/phases	50/3
Motor (rpm)	2830
Poles	2P
Max. current (A) 380-415 V Y	2.34
Max. current (A) 220-240 V D	4.03
Motor protection	IP55
Motor frame size	80

Data can change, please check motor plate



DIMENSIONS

A	B	C [1]	D [2]	ØD*	I	J	H	G	E	F	J1	J2	K1
640	590	650	600	400	80	255	450	430	82	430	700	200	700

K2	X2	Ød
200	200	10

[1] (C x D) Nominal size of the wall opening.

[2] (C x D) Nominal size of the wall opening.

Dimensions without explicitly defined units are shown in millimeters (mm). Dimensions depending on the motor are approximate

Approx. weight (kg)	55
---------------------	----

